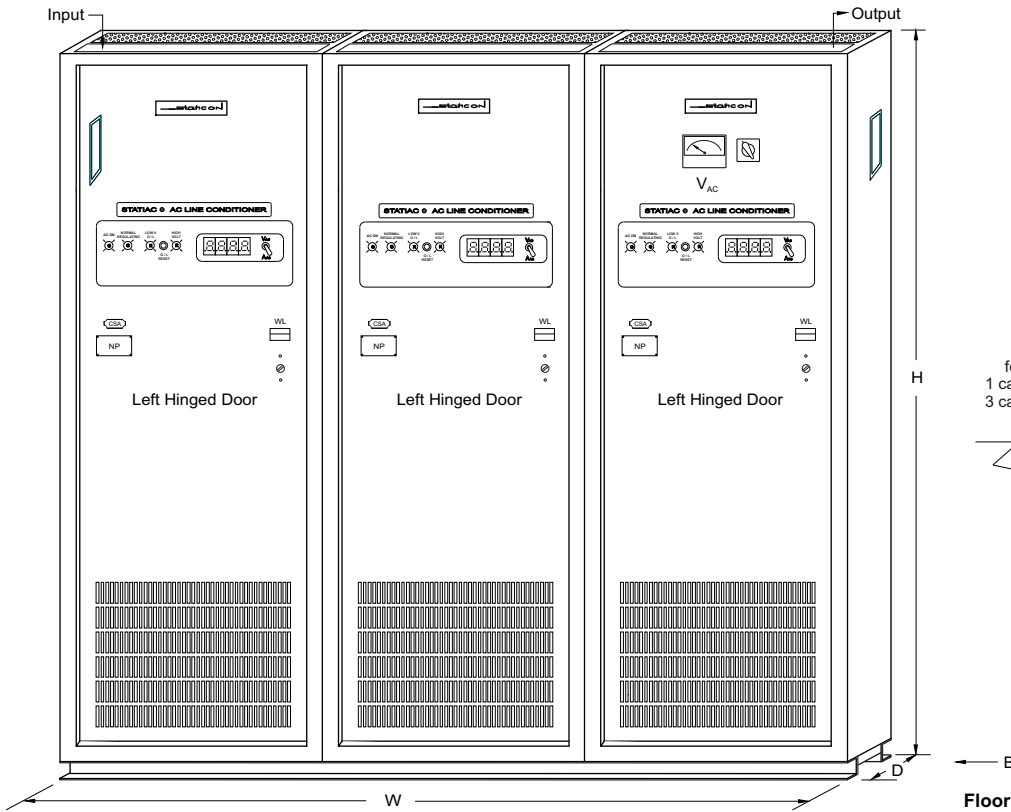
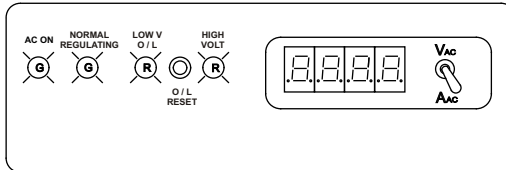
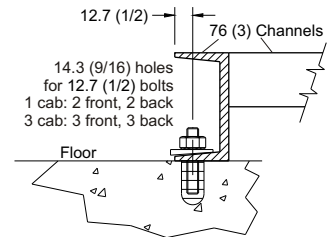


Output kVA	Cabinet Style	Dimensions mm (in)			Weight kg (lb)
		H	W	D	
6	F	1600 (63)	610 (24)	610 (24)	190 (419)
9	F	1600 (63)	610 (24)	610 (24)	260 (573)
12	F	1600 (63)	610 (24)	610 (24)	330 (728)
15	F	1905 (75)	762 (30)	610 (24)	400 (882)
18	F	1905 (75)	762 (30)	610 (24)	450 (992)
22.5	F	1905 (75)	762 (30)	610 (24)	560 (1235)
30	F	1905 (75)	762 (30)	762 (30)	610 (1345)
37.5	F3	1600 (63)	1829 (72)	762 (30)	715 (1576)
45	F3	1600 (63)	1829 (72)	762 (30)	900 (1984)
60	F3	1905 (75)	1829 (72)	762 (30)	1000 (2205)
75	F3	1905 (75)	2286 (90)	762 (30)	1270 (2800)
90	F3	1905 (75)	2286 (90)	762 (30)	1385 (3053)
120	F3	2057 (81)	2743 (108)	914 (36)	2005 (4420)
150	F3	2057 (81)	2743 (108)	914 (36)	2535 (5589)
180	F3	2057 (81)	2743 (108)	914 (36)	2770 (6107)
240	F3	2210 (87)	3658 (144)	914 (36)	4350 (9590)

STATIAC® AC LINE CONDITIONER



View 'B' Anchoring Detail



Notes EEMAC / NEMA / CSA indoor type 1 cabinets.
 14 / 10 gage steel panels / mounting channels.
 Standard finish is ASA 61 grey, baked enamel.
 All access via front door. Top / side cable entry.
 305 / 610 mm (12 / 24 in) rear / top air space required.
 All dimensions in **mm (inches)**.



Scale: Not to scale	Title: Statiac AC Line Conditioners Three Phase AC Output Standard Cabinets	
Applications engineering and sales information.	By: rh	Date: January 2005
© Staticon Ltd., 2005	Drawing: lc_3ph_6-240kva_cabs_0105 Rev 0	

