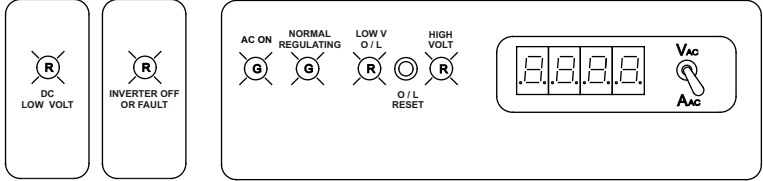
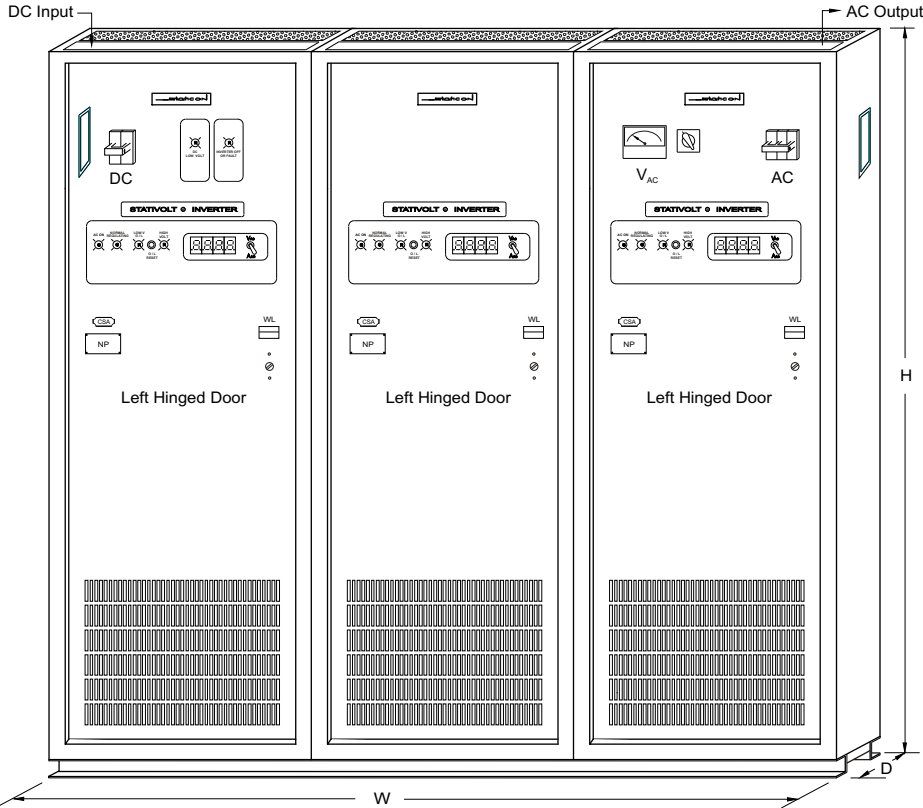


Output kVA	Cabinet Style	Dimensions mm (in)			Weight kg (lb)
		H	W	D	
3.6	F	2134 (84)	610 (24)	610 (24)	190 (419)
6	F	2134 (84)	610 (24)	762 (30)	235 (518)
9	F	2134 (84)	610 (24)	762 (30)	310 (683)
12	F3	1600 (63)	1448 (57)	610 (24)	570 (1257)
15	F3	1600 (63)	1448 (57)	610 (24)	690 (1521)
18	F3	1600 (63)	1448 (57)	610 (24)	810 (1786)
22.5	F3	1600 (63)	1448 (57)	610 (24)	900 (1984)
30	F3	1600 (63)	1829 (72)	762 (30)	1020 (2249)
37.5	F3	1600 (63)	1829 (72)	762 (30)	1170 (2579)
45	F3	1905 (75)	1829 (72)	762 (30)	1410 (3109)
60	F3	1905 (75)	2286 (90)	762 (30)	1980 (4365)
75	F3	1905 (75)	2286 (90)	762 (30)	2340 (5159)
90	F3	2134 (84)	2286 (90)	914 (36)	2830 (6239)
120	F3	2134 (84)	2743 (108)	914 (36)	3420 (7540)
150	F3	2134 (84)	2743 (108)	914 (36)	4275 (9425)
180	F3	2134 (84)	3200 (126)	1067 (42)	5130 (11310)

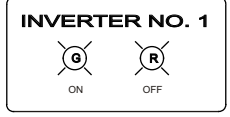
**STATIVOLT® INVERTER**



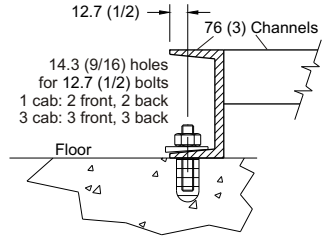
**Floor Mount Cabinet (F)**



**Dual Redundant Inverters**  
Parallel, floor mount, inverters are 2x the width and weight as shown above.



**View 'B' Anchoring Detail**



**Floor Mount Cabinet (F3)**

**Notes** EEMAC / NEMA / CSA indoor type 1 cabinets.  
14 / 10 gage steel panels / mounting channels.  
Standard finish is ASA 61 grey, baked enamel.  
All access via front door. Top / side cable entry.  
305 / 610 mm (12 / 24 in) rear / top air space required.  
All dimensions in **mm (inches)**.



Scale: Not to scale	Title: StatiVolt Inverters Three Phase AC Output Standard Cabinets	
Applications engineering and sales information.	By: rh	Date: January 2005
© Staticon Ltd., 2005	Drawing: invert_3ph_6-180kva_cabs_0105 Rev 0	

