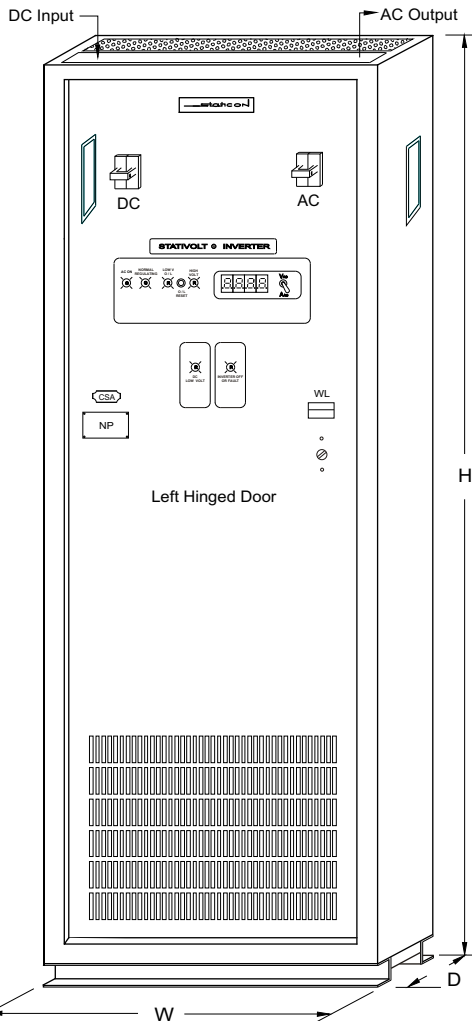


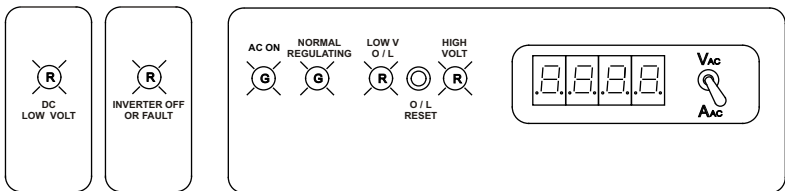
Rack Mount Cabinet (R)

Output kVA	Cabinet Style	Dimensions mm (in)			Weight kg (lb)
		H	W	D	
0.6	R	311 (12.3)	584 (23)	508 (20)	40 (88)
1.2	R	445 (17.5)	584 (23)	508 (20)	60 (132)
2	R	533 (21.0)	584 (23)	508 (20)	75 (165)
3	R	622 (24.5)	584 (23)	508 (20)	100 (220)
4	F	1600 (63)	483 (19)	610 (24)	190 (419)
5	F	1600 (63)	483 (19)	610 (24)	230 (507)
6	F	1600 (63)	483 (19)	610 (24)	270 (595)
7.5	F	1600 (63)	483 (19)	610 (24)	300 (661)
10	F	1600 (63)	610 (24)	762 (30)	340 (750)
12.5	F	1600 (63)	610 (24)	762 (30)	390 (860)
15	F	1905 (75)	610 (24)	762 (30)	470 (1036)
20	F	1905 (75)	762 (30)	762 (30)	660 (1455)
25	F	1905 (75)	762 (30)	762 (30)	780 (1720)
30	F	2057 (81)	762 (30)	914 (36)	940 (2072)
40	F	2134 (84)	914 (36)	914 (36)	1140 (2513)
50	F	2134 (84)	914 (36)	914 (36)	1425 (3142)
60	F	2134 (84)	1067 (42)	1067 (42)	1710 (3770)



Floor Mount Cabinet (F)

STATIVOLT® INVERTER

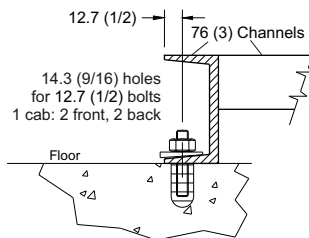


Notes

- EEMAC / NEMA / CSA indoor type 1 cabinets.
- 14 / 10 gage steel panels / mounting channels.
- Standard finish is ASA 61 grey, baked enamel.
- All access via front door. Top / side cable entry.
- R Cab: 89 mm (3.5 in) air space required all sides.
- 483 mm (19 in) W cabinets also available.
- F Cab: 305 / 610 mm (12 / 24 in) rear / top air space required.
- All dimensions in **mm (inches)**.

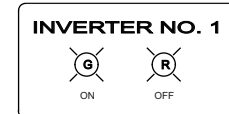


View 'B' Anchoring Detail



Dual Redundant Inverters

Parallel, floor mount, inverters are 2x the width and weight as shown above.



Scale: Not to scale	Title: StatiVolt Inverters One Phase AC Output Standard Cabinets	
Applications engineering and sales information.	By: rh	Date: January 2005
© Staticon Ltd., 2005	Drawing: invert_1ph_1-60kva_cabs_0105 Rev 0	

